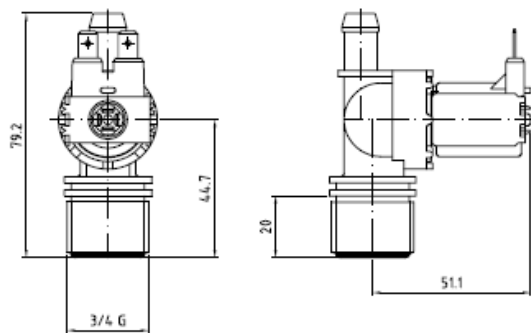
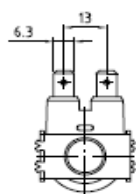


# ONE WAY INLET VALVE

TIPO ES 180/88

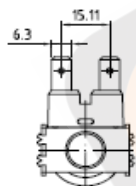


## Coils



220/240V 50-60Hz 8VA  
220/240V 50-60Hz 8VA RINF.  
12V 50-60Hz  
12V DC  
24V 50-60Hz  
24V DC

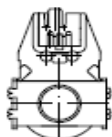
0.2 ÷ 10 bar (0.02 ÷ 1Mpa)  
T60°C Tm25°C 100% ED  
T60°C Tm90°C AB 3/5MIN



120V 60Hz

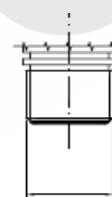
0.2 ÷ 10 bar (0.02 ÷ 1Mpa)  
T60°C Tm25°C 100% ED  
T60°C Tm90°C AB 3/5MIN

220/240V 50-60Hz 8VA  
220/240V 50-60Hz 8VA RINF.  
120V 60Hz  
24V DC



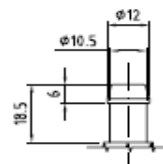
0.2 ÷ 10 bar (0.02 ÷ 1Mpa)  
T60°C Tm25°C 100% ED  
T60°C Tm90°C AB 3/5MIN

## Inlet thread

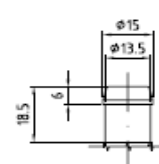


## Outlet

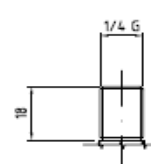
### Small



### Big

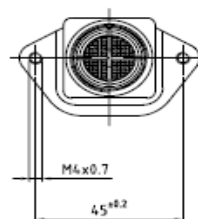


### Threaded

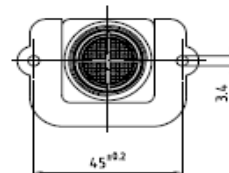


## Bracket

### Metal



### Plastic 45



### Plastic 50

